



# AMAZING GRACE

*Celebrating our Bluegrass  
and Gospel Heritage*



PALOUSE  
CHORAL  
SOCIETY

***Chorale & Chamber Choir***

*Richard Kriehn - mandolin ~ J.P. Shields - guitar  
Paul Ely Smith - banjo ~ Dave Snider - bass ~ Mabel Vogt - fiddle*

***Michael Murphy - Artistic & Music Director***

*Sunday, November 1, 2015 ~ 4:00 pm ~ St. Boniface Catholic Church ~ Uniontown, WA*

# PALOUSE CHORAL SOCIETY

## Chorale & Chamber Choir

present

### *Amazing Grace*

*Celebrating our Bluegrass and Gospel Heritage*

with special guests:

Richard Kriehn - mandolin ~ J.P. Shields - guitar

Paul Ely Smith - banjo ~ Dave Snider - bass ~ Mabel Vogt - fiddle

under the direction of

Michael Murphy, Artistic and Music Director

#### **Chorale**

The World Beloved: A Bluegrass Mass

Phillip Branigan, tenor

Jill Freuden, soprano

Jacob Fulcher, tenor

Heather Nelson, alto

Stephanie Sant, alto

Beth Stockinger, soprano

Danika Stromberg, soprano

Lacy Sutter, soprano

Carol Barnett

Marisha Chamberlain, poet

Paul Smith, arranger for Banjo score

#### **Intermission**

#### **Chamber Choir**

Down to the River to Pray

Beth Stockinger, soprano

arr. Philip Lawson

A City Called Heaven

Hannah May, soprano

arr. Josephine Poelinitz

Angel Band

Life is Like a Mountain Railroad

Meredyth Goodwin, soprano

Jacob Fulcher, tenor

Chloé Haagen, soprano

Shawn Kirchner

arr. Nick Page

#### **Chorale Women**

Will the Circle Be Unbroken

arr. David Moore

#### **Chorale Men**

I Am a Man of Constant Sorrow

arr. Kirby Shaw

#### **Chorale**

Unclouded Day

Shawn Kirchner

*Thank You for:*

*\*Turning off cellular phones, pagers, and watch alarms and not using recording or photography devices*

## Program Notes

---

In the eighteenth century, immigrants from Great Britain and Ireland arrived in Appalachia, in the eastern United States, bringing with them the musical traditions of their homelands: English and Scottish narrative ballads and Irish reels (dances) with fiddle accompaniment. These were the seeds of the Appalachian country music known as Bluegrass. Later influenced by African-American music, Bluegrass also incorporated jazz elements, particularly syncopation. Bluegrass pioneer Bill Monroe pithily captures the spirit of the genre as “Scottish bagpipes and ole-time fiddlin’. It’s Methodist and Holiness and Baptist. It’s blues and jazz, and it has a high lonesome sound.” It was Monroe Crossing, who, with Philip Brunelle’s choir, VocalEssence, premiered Carol Barnett’s *The World Beloved: A Bluegrass Mass*. Commissioned in 2007, the piece has since taken the choral world by storm. It was most recently performed at Carnegie Hall in February 2013, with Monroe Crossing and choirs from across the United States.

Composer Carol Barnett writes, “To bring the solemnity of the classical choir-based mass together with the down home sparkle of bluegrass—now there’s an assignment. My highest hope is that listeners coming from one tradition—classical or bluegrass—and perhaps dubious about the other, might discover something new and wonderful in the combination, as I have. Composing the music for *The World Beloved* has given me the chance to write cheery sacred music—all too rare in a medium rife with staid and even lugubrious settings. And it’s brought me back to memories of music heard while visiting my grandparents, country music with a church flavor that told stories and came out of a scratchy old record player. Grandma would not have allowed dancing, but under the table I tapped my toes.”

The classical Latin Mass texts form the basis of the lyrics, interspersed with Marisha Chamberlain’s evocative poetry, which adds a folksy piquancy. Chamberlain writes, “Bluegrass is more than a sound. The lyrics of so many bluegrass songs display an unpretentious, earthy philosophy that is easy to sing and easy to understand: Adam lives just up the street and Eve’s the girl next door. Love is the major theme—frustrated yearning love, secretly satisfied love, or boldly proclaimed love. And although romantic love between two people is huge in bluegrass, so is the love of God, and the Gospel tradition. ‘In this is love, not that we loved God but that He loved us,’ according to John in the Gospel. This launches our Bluegrass Mass as an earthy immediate story of love between Creator and creation.”

“Carol Barnett manages to honor both the classical choral tradition and the improvisatory impulse of bluegrass music in her contemporary rendition of the mass. She traverse(s) the two idioms quite ingeniously, bringing out the best in both ensembles. The contrasts between the sophisticated classical choral sound and the jubilant bluegrass harmonies (are) effectively used to make the text come alive...the triumphant Gloria...(is) an exuberant success...Poet Marisha Chamberlain creates lyrics giving each of the sections of the Catholic liturgy (Kyrie, Gloria, Sanctus, etc.) a contemporary interpretation. She also intersperses verses of a bluegrass ballad elucidating a joyful spirituality...with formality and jubilation well balanced in this life-affirming celebration.” (William Randall Beard, *Minneapolis Star Tribune*, December 2007)

*Thank you for joining us this evening!*

Take Advantage of our 2015-2016 Season Tickets

**ALL 4 CONCERTS FOR ONLY \$48!**

If you purchased a single ticket for today's performance, you can apply the purchase price toward a set of season tickets in the lobby during intermission or after the concert.

## Palouse Choral Society

2015-16 Season • [www.palousechoralsociety.org](http://www.palousechoralsociety.org)



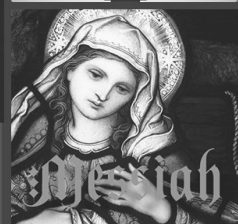
2015

**November 1 • 4:00pm**

St. Boniface Catholic Church, Uniontown, Washington

**PCS Celebrates the Music of our Bluegrass & Gospel Heritage**

with Richard Kriehn, mandolin • Paul Smith, banjo • Mabel Vogt, fiddle •  
Dave Snider, bass



2015

**December 4 • 7:30pm & December 6 • 4:00pm**

St. Boniface Catholic Church, Uniontown, Washington

**Messiah Highlights & Palouse Choral Society Children's Choir Debut!**

with Lynette Pfund, soprano • Christopher Pfund, tenor • Steven Mortier, bass



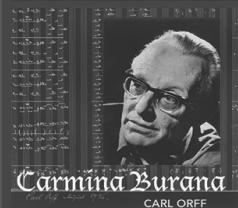
2016

**February 14 • 4:00pm**

Haddock Concert Hall, University of Idaho, Moscow, Idaho

**Northwest Composers** sung by Palouse Choral Society Chamber Choir

with Palouse Choral Society Children's Choir



2016

**April 15 • 7:30pm & April 17 • 4:00pm**

Administration Auditorium, University of Idaho, Moscow, Idaho

**Carmina Burana**

with Lynette Pfund, soprano • Christopher Pfund, tenor •  
Richard Zeller, bass • Roger McVey, piano • Elena Panchenko, piano

PALOUSE  
CHORAL  
SOCIETY

## Our Bluegrass Band Members

---



Minnesota-based multi-instrumentalist Richard Kriehn has been playing with the house band on A Prairie Home Companion since June of 2010. Richard has played in symphony orchestras, bluegrass bands, baroque ensembles, pit orchestras, cover bands, country bands...but there is no one he would RATHER make music with than with his friends at Prairie.

While living in Nashville, he toured with Travis Tritt, Aaron Tippin and Michael Peterson, all the while playing in the Nashville Mandolin Ensemble and the bluegrass group 1946. He appeared numerous times on the Grand Ole' Opry and made appearances on The Rosie O'Donnell Show, Prime Time Country as well an episode of Walker, Texas Ranger.

Before he and his family moved to the Twin Cities, they lived in Eastern Washington where he was a faculty member in the School of Music at Washington State University.

---



John Paul Shields is a guitar performer, composer, and instructor with over 19 years of professional experience, currently based in Spokane, WA. A graduate of the University of Washington classical guitar program, John Paul has performed worldwide in a colorful array of settings, from public festivals in Peru to Seattle's esteemed Benaroya hall to live on radio and television. A passionate musician dedicated to the lifelong pursuit of learning, John Paul has played multiple genres of music, from solo to ensembles of all types and sizes, including classical, Latin, folk, rock, and jazz.

In 2008, John Paul's career moved him to Peru, where, in addition to performing and teaching, he studied the rich intricacies of Andean folk guitar music. Besides his work on Peruvian and classical guitar repertoire, Mr. Shields currently teaches guitar at Spokane Falls Community College in Spokane, WA, while returning to school for his masters at the University of Idaho in guitar performance. He additionally is collaborating in the guitar duo, South Hill Guitars, with University of Idaho guitar professor James Reid, as well as translating Método Guitarra Andina Peruana into an English ebook. Mr. Shields is also working on a solo guitar project that will summarize his work in both classical and Peruvian guitar

---



Paul Ely Smith is an independent composer, musician, and record producer living in Palouse, Washington and plays many stringed instruments. Besides his focus on the lost music of the African-American gourd banjo, he also plays Irish and North American fiddle music, piano, guitar, mandolin, rubab, al'ud, djembe, and krar.

Paul has done record production for other artists, but is now focusing on his own projects including his opera/musical "Cassandra" and working on a gourd banjo CD. He has worked in a remarkable range of venues, from performing the mandolin in the Washington-Idaho Symphony's staging of Mozart's "Don Giovanni" (February 2014) to performing his "Palouse ragas" on the Afghan rubab for restorative yoga in Palouse once a month.

Fall 2007 he received a commission to compose music for a devotional service being created by the Common Ministry at Washington State University and University of Idaho for people of no particular religion. The result, "Mosaic," was recorded in Spring of 2008 and the limited CD release is now sold

out. In Spring of 2006 he released a CD of his own musical compositions for Seattle-based performance artist Thomas Arthur called "Handmade." A CD of historic and original music for fretless gourd banjo that he recorded will be released in 2016. [www.palouserivermusic.com](http://www.palouserivermusic.com)

## Our Bluegrass Band Members

---



David Snider has been playing both electric and string bass for over 45 years. He performed in the San Francisco Bay area where he played all styles of music including rock, blues, country, and jazz in the late 60's and 70's. The 70's saw him as a section player in the Monterey County Symphony and directing groups in the US Air Force, performing all over the world in jazz bands, concert bands, rock bands, Ceremonial bands, and chamber groups and arranging over 500 charts for jazz band, rock bands, and concert bands. He has performed with many of the jazz greats including Jon Faddis, Gabe Baltazar, Booby Shew, Marvin Stamm, Lawrence Welk and many many others.

After retirement in 2003 he received his Masters degree from Washington State University. In 2006 he was hired to teach Rock & Roll history, jazz arranging, and jazz improvisation among many other jazz classes. He currently performs and directs the faculty jazz group, Jazz Northwest, and plays throughout the northwest. He also composes and arranges jazz charts for Walrus Publishing Company. No strangers to each other, he and Kriehn performed together for several years in the earlier part of this century.



Two-time Idaho Champion fiddler Mabel Vogt has played fiddle since 1972. Previously, she studied classical violin and played for 12 years in the University of Idaho Orchestra. Vogt has been a guest artist playing fiddle with the Moscow Chamber Orchestra and the University of Idaho Vandaleers. She is a member of the Spokane Scottish fiddle group Nine Pint Coggies, and played with the bluegrass band Blue Road Rounders.

Vogt enjoys participating in fiddle contests and festivals. She has won many regional, national and Canadian contest titles and has served as a judge at 50 competitions. She plays country, bluegrass, Celtic, Canadian, and Texas fiddle, as well as contest style. She performs at charity and social events, concerts and dances. She was honored with a Festival Dance award for contributions to the arts.

Teaching and passing on the tradition of fiddling is important to Vogt. She gives private lessons and has taught at many northwest music camps and workshops. Vogt has also contributed music in the communities of the Palouse for years with the Idaho Oldtime Fiddlers and her youth group Potlatch Junior Jammers. She plays piano and guitar as well as fiddle. A graduate of the University of Idaho and Washington State University, Vogt is a retired university German instructor.

---

## **Support Palouse Choral Society by shopping at Amazon Smile!**



### **What is AmazonSmile?**

AmazonSmile is a simple and automatic way for you to support your favorite charitable organization every time you shop, at no cost to you.

### **How do I shop at AmazonSmile?**

To shop at AmazonSmile simply go to [smile.amazon.com](https://smile.amazon.com) from the web browser on your computer or mobile device.

### **Which products on AmazonSmile are eligible for charitable donations?**

Tens of millions of products on AmazonSmile are eligible for donations. You will see eligible products marked "Eligible for AmazonSmile donation" on their product detail pages.

### **Can I use my existing Amazon.com account on AmazonSmile?**

Yes, you use the same account on Amazon.com and AmazonSmile. Your shopping cart, Wish List, wedding or baby registry, and other account settings are also the same.

### **How do I select a charitable organization to support when shopping on AmazonSmile?**

On your first visit to AmazonSmile ([smile.amazon.com](https://smile.amazon.com)), you need to select a charitable organization to receive donations from eligible purchases before you begin shopping. We will remember your selection, and then every eligible purchase you make at [smile.amazon.com](https://smile.amazon.com)\* will result in a donation.

\*Remember to always log on to your Amazon account using AmazonSmile: [smile.amazon.com](https://smile.amazon.com) . You will use the same password that you use for Amazon.com.

## Our Artistic and Music Director

---



Michael Murphy made his debut as Artistic and Music Director of the Palouse Choral Society in 2009. Dr. Murphy has a wealth of conducting experience, ranging from the university level to community choruses, secondary school, and church. Critics, colleagues, and singers acknowledge Murphy's conducting and rehearsal style as passionate, enthusiastic, engaging, and above all, positive. Under his baton, Palouse Choral Society has increased its membership, operating budget, and the concert series to four concerts per year.

Dr. Murphy is Director of Choral Activities and Associate Professor of Conducting at the University of Idaho where he conducts choral ensembles, teaches graduate and undergraduate courses in conducting, choral literature, and techniques, and administers the Masters in Choral Conducting program. He is the Founder and Co-Artistic Director of the annual Idaho Bach Festival. This spring Michael was recognized with the University of Idaho Mid-Career Faculty Award for outstanding scholarship, teaching, and engagement.

Dr. Murphy serves as an active adjudicator and clinician for workshops, festivals, honor choirs and clinics in the northwest and southeast and his international conducting experiences include Austria, China, Czech Republic, and Germany. In 2015, Michael will represent the American Choral Directors Association (ACDA) as a Conducting Fellow for the International Conductor Exchange Program in Sweden. As an active member, Dr. Murphy has held several state leadership positions in ACDA and NAFME. Presently he is President of the Idaho American Choral Directors Association and serves on the national board of the National Choral Collegiate Organization (NCCO). Murphy received his degrees in Conducting and Choral Music Education from Florida State University and East Carolina University.

As an active church musician, Murphy is the Choral Director at Trinity Lutheran Church in Pullman, WA. Michael resides in Moscow with his wife, Claire, and two sons, William and Colin.

## Our Accompanist

---



**Elena Panchenko** is originally from Ukraine and studied at the Moscow Conservatory where she earned her degree in piano performance, music history and music theory. She served as the Musical Director of the Penn State Opera for four years and performed the debut of two new operas, including *Mrs. Satan*, an opera about the life of the first woman presidential candidate, Victoria Woodhall. Working extensively as an accompanist and church musician, Elena has performed with groups as varied as a children's dance group to such well-known musicians as Francis Orval and David Shifrin, clarinetist and Music Director of Chamber Music at the Lincoln Center. In addition to Elena's duties with the chorale, she is also the Music Director at St. James' Episcopal Church in Pullman. Elena's family includes her husband, Alex, WSU Math Professor and former Ukrainian rock star (as is Elena), and her son Ivan, a university student.

## Palouse Choral Society Board of Directors & Staff

---

### Executive Committee

Jan Keller, *President*  
Anne Moscrip Ramsey, *Vice-President*  
Jack Keller, *Secretary*  
Jim Reece, *Treasurer*

### Chorale Member Representatives

Janet Adams  
Judy Croskey

### Community Members

Laura Hill  
Kathy Pitman  
Julia Pomerenk  
Sharon Walbridge

### Staff

Janice O'Toole, *Executive Director*  
Claire Murphy, *Children's Choir Director*  
Michael Murphy, *Artistic and Music Director*

## Our Singers

<b>Sopranos</b>	<b>Altos</b>	<b>Tenors</b>
Janet Adams	Mary Berthiaume	Kevin Brackney
Susan Beamer	Jennifer Bledsoe	Tom Brandt+*
Laurie Caraher	Liz Brandt	Phillip Branigan
Judy Croskey	Sue Byrne	John Brewer
Jill Freuden+*	Sandy Field	Christine Dopke
Meredyth Goodwin*	Judie Hanley*	Jacob Fulcher*
Chloe Haagen*	Jan Keller*	Chris McIntosh*
Becky Hemphill	Ellen Kittell	Teri Riedner
Jana Joyce	Holly McCollister	Bob Stone
Karen Kelly	Kirstin Malm*	
Hannah Knecht	Anne Moscrip Ramsey*	<b>Bass</b>
Monique Lillard	Heather Nelson*	Allen Alstad
Hannah May*	Janet Parsons	Todd Bailey*
Shelley Nice	Annamarie Pearson*	Gene Buchholz*
Ann Norton	Stephanie Sant+*	Jack Keller+*
Charlotte Riersgard	Chris Talbott	Jack Kelly
Beth Stockinger*	Karen Weathermon	Eric Nilsson
Danika Stromberg*	Charmaine Wellington	Gary Peterson
Lacy Sutter	Carole Wells	Tim Prather
Janice Willard		Jim Reece*
		Leo West
		Lynn Youngblood

+ Palouse Choral Society Section Leader

\* Chamber Choir

If your program is missing a card from this location, please stop by the table and pick one up. Thank you!



# Our 2015 –2016 Conductor's Circle, Concert Sponsors, and Concert Partners

These patrons and businesses are underwriting the many expenses inherent with producing excellent choral performances. We express our sincerest gratitude for their contributions and dedication to Palouse Choral Society!

## Conductor's Circle

Anne & Jeff Ramsey  
Beatriz and Edmund Schweitzer

## Concert Sponsors

Scott and Janet Adams with VMRD  
Decagon Devices  
Carl & Shirley Koenen

## Concert Partners

Gary Peterson  
Bill Voxman & Joanne Reece  
Garth and Nancy Sasser  
US Bank  
Sharon Walbridge

## *Support Palouse Choral Society*

### *Levels of support:*

- Conductor's Circle \$5,000 & above
- Concert Sponsor \$2,500
- Concert Partner \$1,000
- Benefactor \$500
- Patron \$250
- Supporter \$100
- Friend \$50



### *Conductor's Circle, Sponsors, and Partners:*

- are recognized in publicity materials: programs, posters, press releases
- are personally recognized and thanked in concert settings
- receive complimentary tickets to concerts

### *Business Advertisers:*

\$100 annually provides a business card advertisement of your company or business in every concert program during the year!

### *Giving Later\*...*

Name PCS as a beneficiary:

- In your Will
- In your Living Trust
- In your Retirement Plan Assets
- In your Life Insurance

\*As always, discuss any planned giving strategies with your attorney or financial planner to take advantage of the opportunities that are right for you.

Palouse Choral Society is recognized by the IRS as 501 (c) (3) Charitable Organization #91-2046954

*Contributions to PCS may be made through our website at [www.palousechoralsociety.org](http://www.palousechoralsociety.org) or by mailing your contribution to:  
PCS, PO Box 8112, Moscow, ID 83843 For more information, please contact our executive director at 509.597.8917.*

# Sincere Gratitude to our **Donors** for Your Generosity!

---

## **Conductor's Circle**

Jeff & Anne Ramsey  
Beatriz & Ed Schweitzer

## **Season Sponsors & Co-Sponsors**

Scott & Janet Adams & VMRD, Inc.  
Decagon Devices  
Carl & Shirley Koenen

## **Concert Partners**

Gary Peterson  
Bill Voxman & Joanne Reece  
Garth and Nancy Sasser  
US Bank  
Sharon Walbridge

## **Benefactors**

Douglas & Linda Adams  
Clearwater Paper  
John & Judy Croskey  
James & Kat Downes  
Edwin Garretson & Steven Watson  
Cynthia Hosick  
Jan & Jack Keller  
Kent & Terry Keller  
Jack & Karen Kelly  
Bruce & Kathy Pitman  
Jim Reece & Pat Hine  
Ellen Thiem

## **Patrons**

Alice & Erol Barbut  
Jennifer Bledsoe  
Elizabeth & Tom Brandt  
Sandy Field  
Susan Gormsen  
Gritman Medical Center  
Hodgins Drug  
Idaho Forest Group  
Michael & Claire Murphy  
Julia Pomerenk  
Rosemary Waldrop  
Diane Weber

## **Supporters**

Janet Adams  
Allen Alstad  
Kathryn Anderson  
Mary Berthiaume  
Susan & Goeff Billin  
Susan Bohm  
Monte & Helen Boisen  
Eugene Buchholz  
Walter & Elinor Butcher  
J.C. & Susan Byrne  
Laurie Caraher  
Shelton & Margaret Chesson  
Mary Dupree  
Jill & Shaun Freuden  
Meredyth Goodwin  
Terri Guenthner  
Barbara Hayes  
Karin Herbert  
Tressa Hochstatter  
Jana & Paul Joyce  
Monique Lillard  
Holly McCollister & Leonard West  
Kirk & Laura McMichael  
Christine Moffitt  
Heather Nelson  
North Idaho Crushing  
Ann Norton  
Teri Riedner  
Charlotte Riersgard  
Stephanie Sant  
David Seamans  
Dave & Kathy Spencer  
Steve & Ann Swannack  
Karen Weathermon  
Charmaine Wellington  
Lynn Youngblood  
Ralph & Valerie Yount

## **Friends**

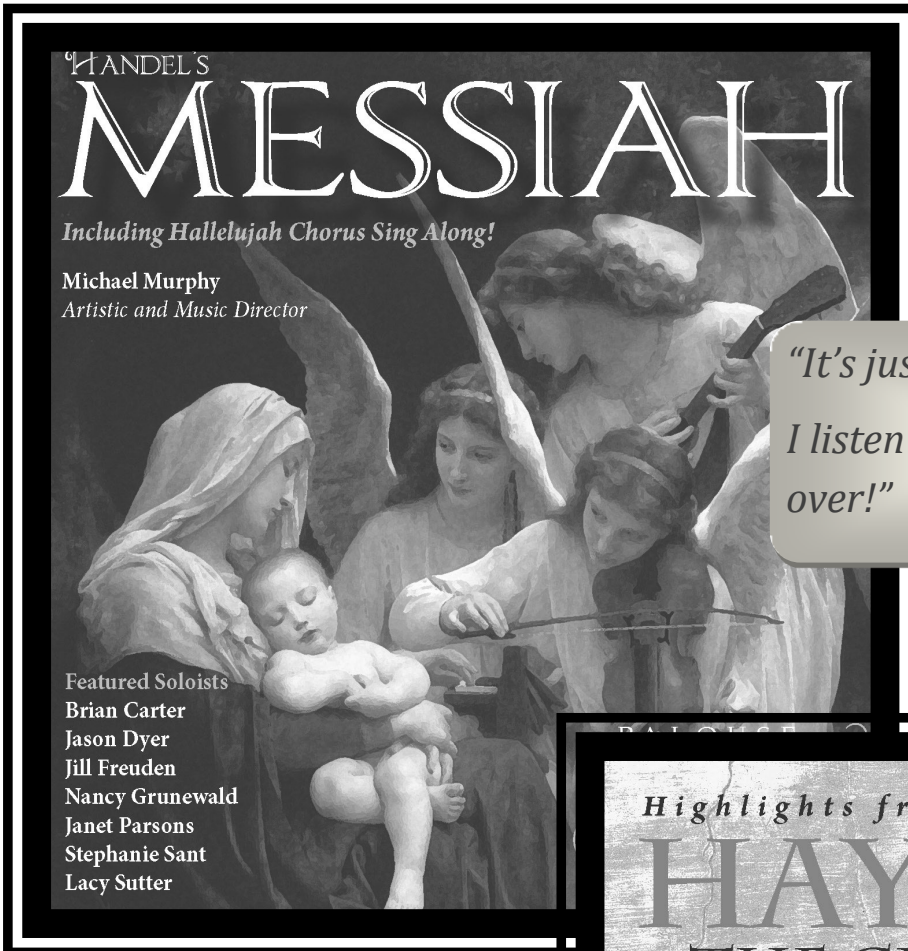
Betty Adams  
Susan Beamer  
Andrea Beckett  
Shelley Bennett  
Jack & Mary Carloye  
Claire & Patrick Clelland  
Richard Domey & Diane Gillespie  
Christine Dopke  
Pat Flansburg  
Doug & Judy Hobart  
Patricia Jenness  
Janet & Ken Kendall  
Kelly Kennaly  
Ellen Kittell  
Latah County Historical Society  
Hammond Limbong  
Nancy & Richard Mack  
Peter & Janet Meserve  
Edgar & Evangeline Michalson  
Eric Nilsson & Janet Willard  
Frances Norton  
Robin Ohlgren  
Carol Padgham Albrecht  
Bruce & Barbara Palmer  
P.E.O. Chapter FZ  
Tim Prather  
Merton & Joan Pubols  
Patricia Rathmann  
Louise Regelin  
Lois Samuelson  
Troy Sprenke  
Bob Stone  
Paul & Nadine Sturm  
Christine Talbott  
Lois Woelfel

# MESSIAH AND CREATION

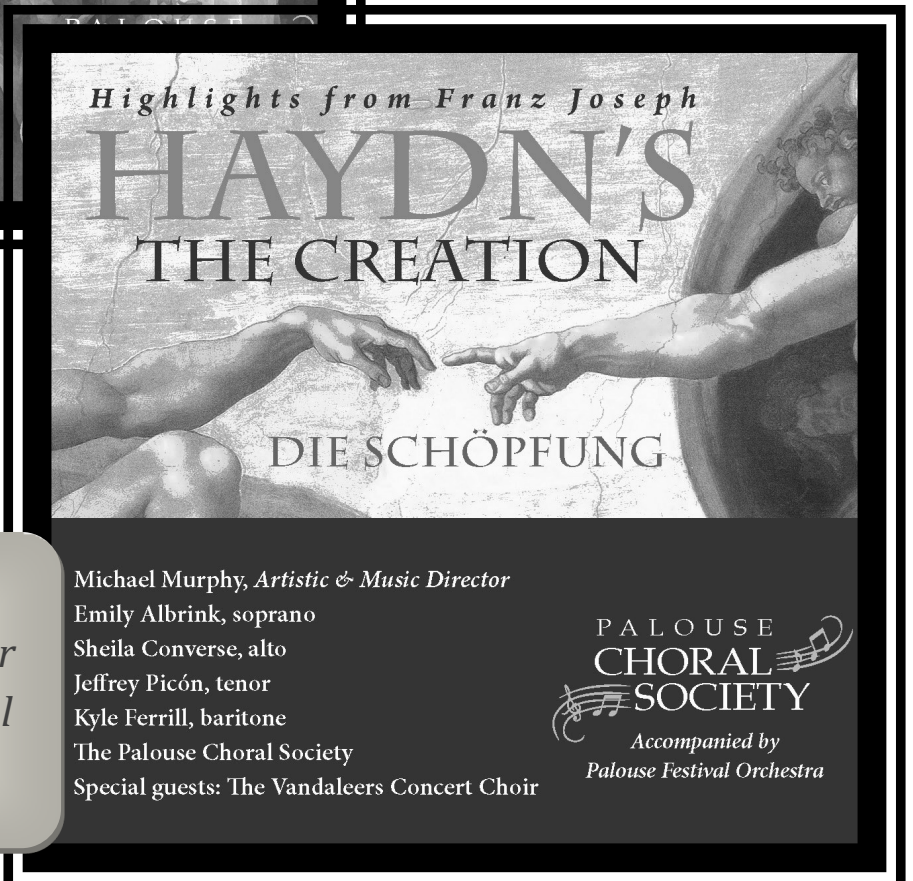
CDs are now available for purchase in the back of the church!

ONLY \$10 EACH!

Now you can enjoy these outstanding performances anytime.



*"It's just beautiful!  
I listen to it over and  
over!"*



*"Only \$10?  
That's a steal for  
such a beautiful  
performance!"*

**JOIN OUR FRIENDS  
IN THE  
PERFORMING ARTS  
FOR THEIR  
UPCOMING PERFORMANCES!**

**Washington Idaho Symphony**  
washingtonidahosymphony.org

**Regional Theatre of the Palouse**  
rtoptheatre.org

**Moscow Community Theatre**  
moscowcommunitytheatre.com

**Pullman Civic Theatre**  
pullmancivictheatre.org

**Palouse Harmony Chorus**  
palouseharmonychorus.com

**Inland Harmony Chorus**  
See us on fb

**Community Band of the Palouse**

Contact: [communitybandofthepalouse@gmail.com](mailto:communitybandofthepalouse@gmail.com)

REGIONAL  THEATRE OF THE PALOUSE  
122 N Grand Ave. Pullman WA 99163

PRESENTS  
**SWEENEY  
TODD**  
THE DEMON BARBER  
OF FLEET STREET

A Musical Thriller by Stephen Sondheim

**NOVEMBER**  
**5, 6, 7\*, 8\* & 11, 12, 13, 14\*, 15\***  
Curtain at 7:30pm & 1:30 pm

at the  
**RTOPTHEATRE**

*All seats reserved*

Box-Office (509) 334-0750

[www.rtoptheatre.org](http://www.rtoptheatre.org)



Festival Dance Brings You the World  
**Great Performances**  
2015 | 2016

**FLAMENCO  
VIVO**

November 13th 7:30pm  
Jones Theatre at Daggy Hall

*"...the coiling wrists, the angry feet  
and curving backs, never fail to  
entrance an audience."*



Photo by Lou Greenfield

**Joy**  
*to the  
World*

December 5th 7:30pm  
U of I Administration  
Building Auditorium

*"Local artists welcome in  
the holiday season."*



**shókoto**

February 13th 7:30pm  
U of I Administration  
Building Auditorium

*"...a spicy fusion of spilted  
African music and dance..."*



208.883.3267 | [festivaldance.org](http://festivaldance.org)

Festival Dance is in residence at the University of Idaho.

Auditorium  
*Chamber Music*  
Series

UNIVERSITY OF IDAHO

2015-2016 Season

**Heinavanker**

Tuesday, November 10

7:30 pm in the University of Idaho Auditorium

*This acclaimed Estonian vocal ensemble sings ancient  
runic songs, folk hymns, and early Renaissance sacred  
music as well as works by Arvo Pärt and other  
contemporary Estonian composers that reflect these  
influences.*

Ticket prices: \$10 Student  
\$19 Senior  
\$22 General

Family ticket pricing is available; please check our website.

Concert tickets available at BookPeople in downtown  
Moscow, the door, or on our website:  
[auditoriumseries.org](http://auditoriumseries.org)