

Artistic Director

Dr. Matthew Myers



The new year is starting off with a lot of excitement for PCS! Chorale has been preparing for their invited performance at the Northwest Division of the National Association for Music Education on Saturday, February 15. They were one of only a handful of choirs from our six-state region to be chosen for this honor! They're preparing an eclectic program of five pieces ranging from the Romantic Era to the winner of last year's PCS composition contest. We're so excited to present this music with an audience of music teachers. We'll share the concert with the WSU Chamber Singers at 2pm on 2/15 at the Spokane Convention Center. Shortly thereafter, our Chamber Choir and Children's Choir present their concert series, Good News! We have an exciting program of works by African American composers, with traditional spiritual arrangements to newly composed works in a variety of styles.

We'll also feature several soloists from the choirs. Join us at one of three concerts: Saturday, February 22, 7:30pm, at Lewiston's Silverthorne Theatre; Sunday, February 23, 4:00 pm, at Moscow First United Methodist Church, or Monday, February 24, 7:30pm, at St. James Episcopal Church in Pullman. The Pullman performance will feature just the Chamber Choir. We're so grateful to start off the 2025 year with these wonderful performance opportunities. We're lucky to get to share our music with such a wonderful community. Thank you to all who support the arts as we celebrate our anniversary in Season 25: Here to Thrive!



Madam President Anneliese Zook

We are excited to announce our upcoming concert, "Good News: Celebrating African American Contributions to Choral Music," which will highlight the powerful legacy of African American composers and musicians who have shaped choral music throughout history. From spirituals to contemporary masterpieces, this concert will be a moving celebration of their influence. As we celebrate our 25th anniversary this year, we are filled with gratitude for the incredible support from our community. Your continued generosity has made it possible for us to reach this milestone. We encourage you to consider a donation to help sustain our mission and bring more inspiring music to the Palouse region. Every contribution – large or small – helps us continue to offer outstanding performances and educational programs. Thank you for being part of this journey, and we look forward to celebrating this milestone with you!



Kent Keller
Bass
Chamber
Member

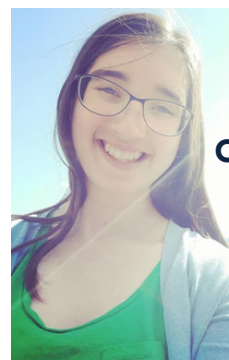
I'm one of those members who goes "way back" – with my spouse, I joined PCS' predecessor Idaho-Washington Concert Chorale as a freshly scrubbed brand-new WSU faculty member in 1988. Each of us had sung in church, school, and college choirs for at least 20 years by that point, and a community choir was a natural refuge within a challenging new life landscape. Since then we have been members, save a few years away for leaves and raising young kids. If anything these absences have highlighted, for me, what choral singing is: striving toward and finding beauty, sometimes inexpressible beauty; and in the striving and finding, making good friends within a like-minded community. Now, the growth of the Chorale under Matt's artistic vision is a wonderful thing – nearly doubling the number of singers over the past few years to produce a membership that is musically and socially vibrant, diverse, talented, and enthusiastic. If it gets any better, I don't know how. Onward!



Administrative
Coordinator
Matt Zook

Greetings!
I can't believe we are already halfway through the 2024-2025 season, and what a season it has been! We had an amazing turnout for both of our December performances at the University of Idaho Administration Auditorium and what a joy it was to share the stage with our guest orchestra musicians. It was truly a moving experience having the adult choir, children's choir and our instrumentalists all performing together. As we move into our second half of this celebratory 25th anniversary season I am so excited to welcome Darcy Howser as our Children's Choir Director for our upcoming February performances; the kids are sounding great and you will not want to miss these concerts! I believe it's important as well to recognize the hard work of Dr. Myers which gives us the opportunity to perform at the National Association for Music Education Conference in Spokane on February 15th.

It is not often you see community ensembles at these types of events and it speaks so highly not only our directors but all the chorale members as well. Congratulations PCS!



Soprano
Chamber Member
Emma Price

My name is Emma Price and I joined the Palouse Choral Society in 2023. I am a soprano in both the Chorale and Chamber choirs. I have always loved music and love being a part of such an amazing choir! In addition to singing, I also play several instruments including piano and guitar. Outside of choir, I am a teacher at Little Explorers in Moscow and my hobbies include reading, video games, and collecting, listening to, and playing music of all kinds! We are singing so many incredible works of music in our upcoming concert and I hope to see you there!

PALOUSE CHORAL SOCIETY



**Alto Chamber
Member
Mac Murphy**

iHi all! My name is Mac Murphy and this is my fourth year singing with PCS. I grew up with music and loved playing piano and singing in school and church choirs all through childhood. Unfortunately, I focused on other passions in college, then spent the next five years moving between locations (Connecticut, NYC, Oregon) and jobs (finance and wilderness therapy). When I moved to Pullman in 2021 to start my clinical psychology grad program, I was excited to build a community and reconnect with activities that had been pushed aside for adult responsibilities. I feel so lucky to have found PCS and can truly say that the amazing people I've met and joy of creating music together have kept me sane through a very stressful time in my life.

I've met friends I know I'll stay in touch with far into the future and grown as a musician and vocalist. I've gotten to travel and perform in places I never would have imagined. This group is deeply entwined with my life in the Palouse and I'm so excited to continue meeting new members and making music with all of you!!



**Tenor Chamber
Member
Lux Landrus**

My name is Luxien Landrus, but you can call me Lux. I'm currently in the Biology PhD program at U of I, and I find choir to be a very helpful creative outlet to break up all that science! Growing up, I participated in choir as soon as I was old enough and have since been singing in some form or another. I feel that choir is a way to express abstract emotions and ideas in a way that is deeper and more powerful than words alone, and in a way that we can be proud of. Part of what I love about PCS is how inclusive we are. I first joined in Fall of 2022, and I was new to singing Tenor. I immediately felt welcomed and included, and since then I have seen the same for a diverse group of new members. PCS is a safe musical community for people of all sorts of backgrounds, and I am so happy to be able to contribute to that!



Darcy Howser and the Palouse Choral Society Children's Choir

Serving as the Interim Children's Choir Director has been a huge honor.

The children have been an absolute joy to work with throughout our rehearsal process. We have all learned and grown alongside each other, and I am beyond grateful for the opportunity to help them expand their musicianship. Together, we are collaborating to provide our audiences with fun, energetic, and memorable performances. Be on the lookout for some fun choreography the students have been extremely excited to implement!

We asked our Children's Choir to complete the sentence "I love choir because..."



"I get to sing
and be
with my
friends."

"Everyone is
kind
and
accepting."

"It's fun
and I love
the songs."

"I like to
sing and
want to find a way
to
be a singing
star."

"Music and
singing make
me happy."

I'm learning to
sing
and how
to not be
afraid of singing in
front of people.



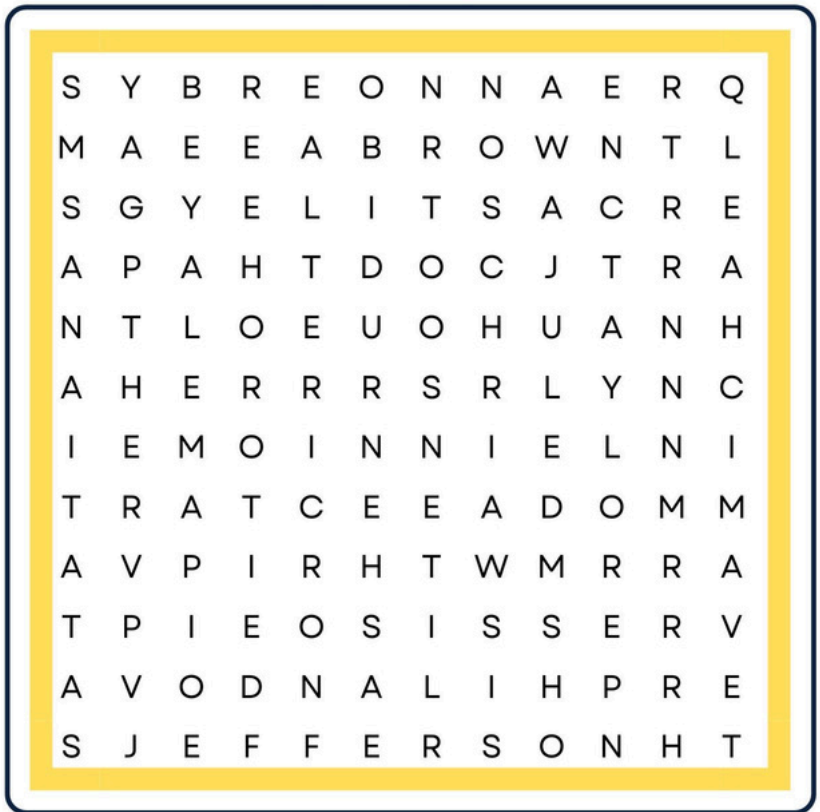
Shelley Tomsovic
Library
Committee
Co-Chair

Did you know that PCS owns and stores up to 120 copies each of over 450 different choral music pieces? It takes a well-executed system, a willing set of volunteers and a very organized Administrative Coordinator to keep it all straight, accounted for, and ready to be used by Chorale members. Before every new concert cycle, the library committee begins its behind the scenes work. Prior to the first rehearsal, the library committee gets together with the Administrative Coordinator to fill individual yellow envelopes with the necessary music for singers in the upcoming concert. At the first rehearsal several of the library committee “man” the music check out tables. They arrive early to make sure members of the Chorale get the music they need for upcoming rehearsals. They also meet in the library space on an as-needed basis after a concert to count the music that’s been turned in, organize it all, and check it back in to the library. Library Committee Chair, Shelley Tomsovic, says, “We have a really nice bunch of folks who donate their time to make sure the music library stays up to date and functional for the organization. If you are interested in helping out, we can always use more folks!” Singers – you are welcome to contact Shelley (Alto section) for more information. You can send a direct message using Slack, or email shelleynice@mac.com.



SAY HER NAME

Find the words hidden in the word search



- | | | | |
|--------------|----------|---------|-----------|
| SAY HER NAME | ATATIANA | TURNER | PHILANDO |
| ERIC | BROWN | TAYLOR | JEFFERSON |
| CASTILE | MICHAEL | BREONNA | PAMELA |

PALOUSE
CHORAL
SOCIETY

25

Here to Thrive

Announcing our 2024-2025 Season

listen to the
silence



Nov 1-2

A collection of music about sound and hearing, plus the world premiere of "Bugtong-Bugtong"



Dec 14-15

A concert of holiday favorites throughout the ages, including J. S. Bach's Magnificat

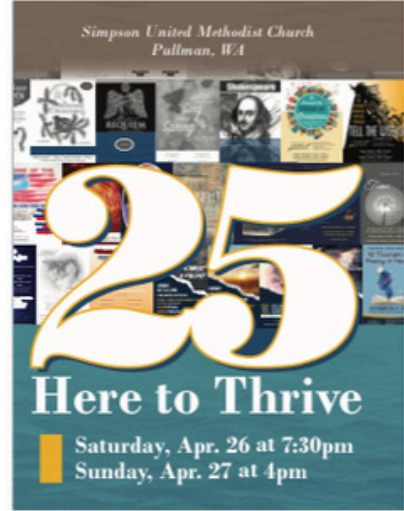
SATURDAY FEB. 22, 7:30PM
Silverthorne Theatre, Lewiston, ID
SUNDAY FEB. 23, 4:00PM
Moscow First United Methodist Church, Moscow, ID



Chamber Choir & Children's Choir

Feb 22-23 -24

A celebration of African-American composers & their contributions to choral music



Apr 26-27

A selection of favorites from the first 25 years of the Palouse Choral Society

Purchase tickets today at PalouseChoralSociety.org



PALOUSE
CHORAL
SOCIETY

25

Here to Thrive

GOOD
NEWS!



SATURDAY FEB. 22, 7:30PM

Silverthorne Theatre, Lewiston, ID

SUNDAY FEB. 23, 4:00PM

Moscow First United Methodist Church, Moscow, ID

MONDAY FEB. 24, 7:30PM

St. James Episcopal Church, Pullman, WA

Chamber Choir & Children's Choir

A celebration of African-American composers & their contributions to choral music



PALOUSECHORALSOCIETY.ORG